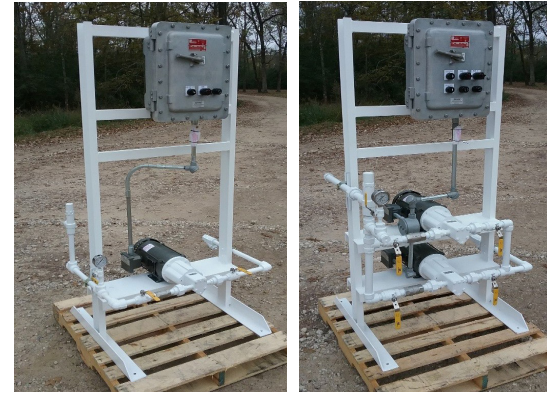


## Technical Data

### Brodie Chemical Transfer Systems

[Model Code]



#### Typical Design & Description

The Brodie Chemical Transfer Systems are designed to operate in numerous additive, dye, and marker applications. Offered in either single or dual configurations and with mechanical Love Joy coupled pumps or Mag-Drive pumps as shown.

The Brodie Chemical Transfer Systems are completely assembled to include system piping, fittings, and isolation.

#### System Features & Design

Free-Standing Rack fabricated, sandblasted, and painted with Epoxy Base, Primer, and Topcoat

Single or Dual Systems equipped with Mechanical Coupled or Mag-Drive Viking Pumps

Pumps Flow Rates available from 1 - 22 GPM

System Fitting Package includes all necessary fittings and components

Explosion Proof Starter Breaker pre-wired and plumbed to Skid

#### Pump Sizes

Skids available in a variety of pump sizes and flow rates. Larger pumps available upon request.

Viking Pump Mod #	Motor Size	Pump Size	Skid Size	Gallons Per Minute
525	1 HP	1/2"	3/4"	1
550	1 HP	1/2"	3/4"	2
510	1 HP	1/2"	3/4"	4
519	2 HP	3/4"	1"	7.6
528	2 HP	3/4"	1"	11.2
716	3 HP	3/4"	1"	16
1425 RPM @ 50HZ    1800 RPM @ 60HZ				



## Mechanical

Pump Skids are prepiped

Ready to be installed

Required field connections are the inlet, outlet, and relief valve piping

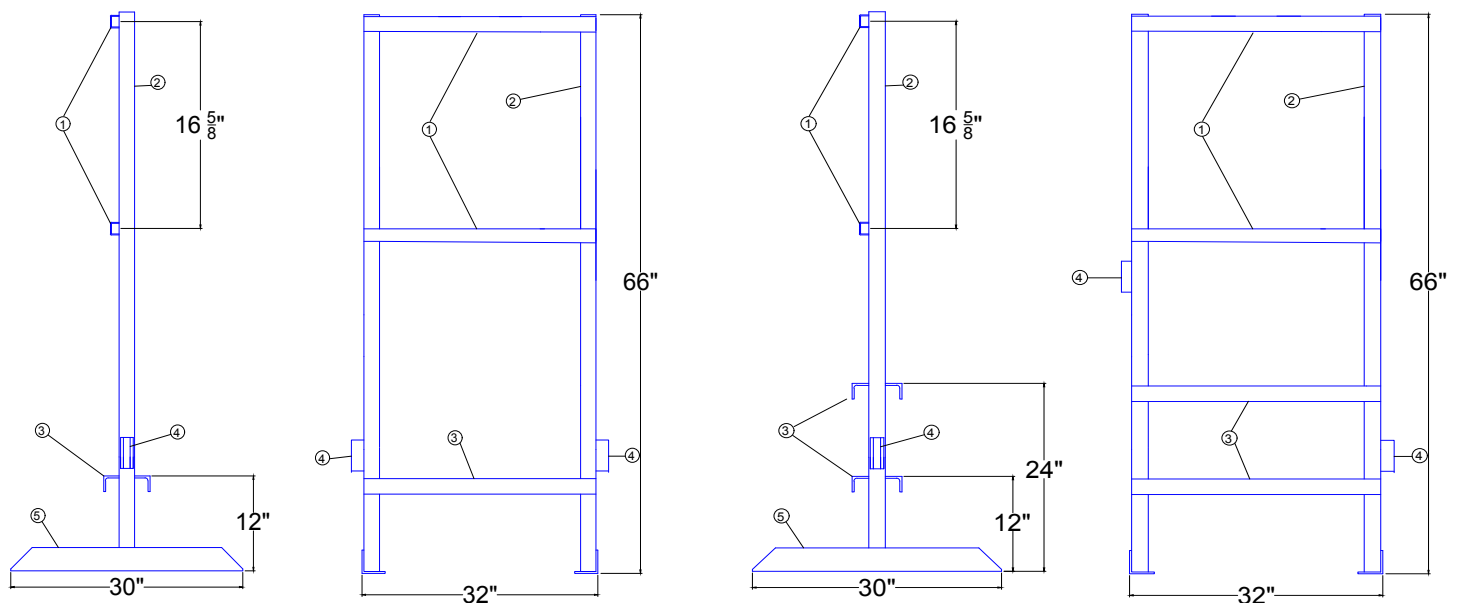
## Electrical

Pump Skids are assembled with explosion proof starters

Field Connections are primary power for breaker and 120 VAC

Hand/Auto control from customer TAS

## Dimensions



Single Pump configuration

Dual Pump configuration

### Brodie International

P.O. Box 450 (30459-0450)  
 19267 Highway 301 North  
 Statesboro, GA 30461  
 USA

Phone: +1 (912) 489-0200  
 Fax: +1 (912) 489-0294