

7200 Series Monitor Accessories

GUARDIAN
FIRE EQUIPMENT, INC.



Hydrant Mounts

Function

- Used to connect monitor to fire hydrant's hose outlet

Construction/Features

- Cast brass swivel inlet and tube/elbow.
- Models 7212-7214** include adjustable steel support arms, brackets and mounting hardware
- Models 7215 & 7216** include welded steel frame and adjustable chrome plated steel support legs.

Model No.	Configuration
7212*	2 1/2" Female NST x 2 1/2" Male NPT
7213*	2 1/2" Female NST x 3" 150# ANSI Flange
7214*	2 1/2" Female NST x 4" 150# ANSI Flange
7215	2 1/2" Female NST x 3" 150# ANSI Flange
7216	2 1/2" Female NST x 4" 150# ANSI Flange

*Specify diameter of hydrant used

Hydrant Base

Function

- Used to support monitor and provide hose outlet connections

Construction/Features

- Schedule 40 steel fabricated, painted red
- Four 2 1/2" male NPT outlets, each with **Model 5110** 2 1/2" brass non-rising stem gate valves and caps

Model No.	Configuration
7224*	6" base x 4" top, 150# ANSI flange
7226*	6" base x 6" top, 150# ANSI flange

*Add suffix **-BV** to model no. for cast iron wafer style butterfly valve (mounts between hydrant and monitor flanges to provide flow control)

Oscillating Base

Function

- Designed to transform a manual monitor into one which oscillates automatically

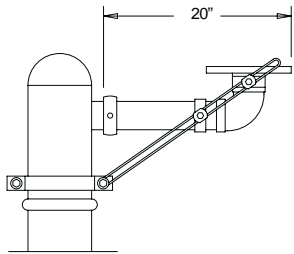
Construction/Features

- All oscillating mechanism components constructed of brass and stainless steel, exterior painted red
- Water-powered, suitable for operating pressures from 50 to 200 PSI
- Adjustable oscillating speed and angle of sweep

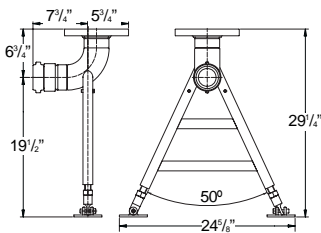
Model No.	Configuration
7233	3" base x 3" top, 150# ANSI flange
7234	4" base x 4" top, 150# ANSI flange



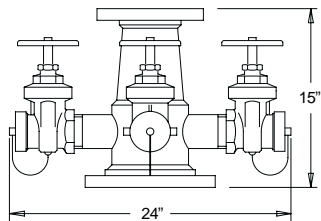
7212-7214



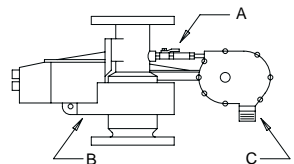
7215 & 7216



7224



7233



A - Oscillating speed adjustment valve
B - Angle of sweep adjustment
C - Water drain connection